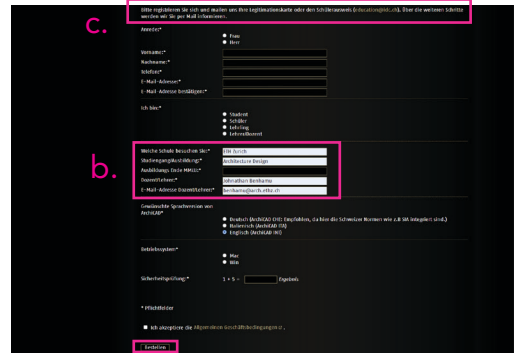




HYTAC Basics SS 23 _ Workflows

00_Software: Archicad

1



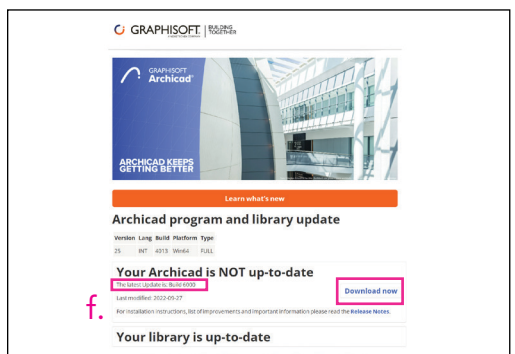
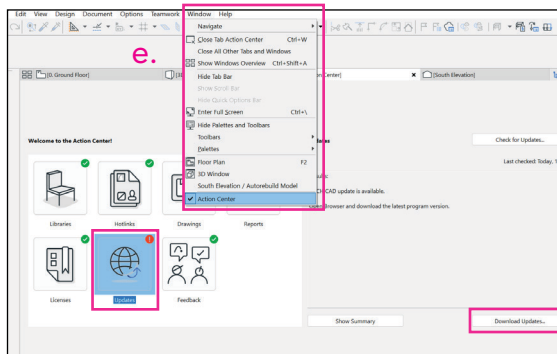
- a. Visit the idc website <https://www.idc.ch/edu/> , and go to the **Registration** Section
- b. **Fill-in** your personal and student data as on the example above and Click **"Bestellen"**
Schule: ETH Zurich, **Studiengang:** Architecture,
Dozent: Jonathan Benhamu, **Dozent email:** benhamu@arch.ethz.ch
- c. **Email** a picture of your **student ID card** to education@idc.ch.

2



- d. You will receive an email with your username and password to log-in on this website: www.idc.ch/meinarchicad. **Download** the Archicad 25 and **Install** the software using your **Serial Number**.

3



- e. Once Archicad is installed, run the software and go to **Window/ Action Center** and select **Updates** as on the picture above. Select **Download Updates...**
- f. You will be directed on a Graphisoft website. **Download** and **install** the **Build 6000**